

THE BROOKMONT

The Brookmont is a ranch style home with an inviting exterior and large front porch. It features an open concept floor plan, a large master suite and options to add a study, luxury master bath or finished lower level.

DETAILS:

Ranch Floor Plan

3 Bedrooms

2 Baths

1,678 Square Feet

2 Car Garage

Want to create your dream home virtually? Click on our Interactive Design Tool tab at fandfhomes.com

The elevations on this brochure are an artist's conception and may vary slightly from actual construction. Cupolas, dormers, and other exterior detailing are optional. Please be sure to review actual blueprints with Community Sales Manager for specific plan and elevation details.

Manor Collection

ELEVATION I



ELEVATION II



ELEVATION III



ELEVATION IV



ADDITIONAL ELEVATIONS

ELEVATION V

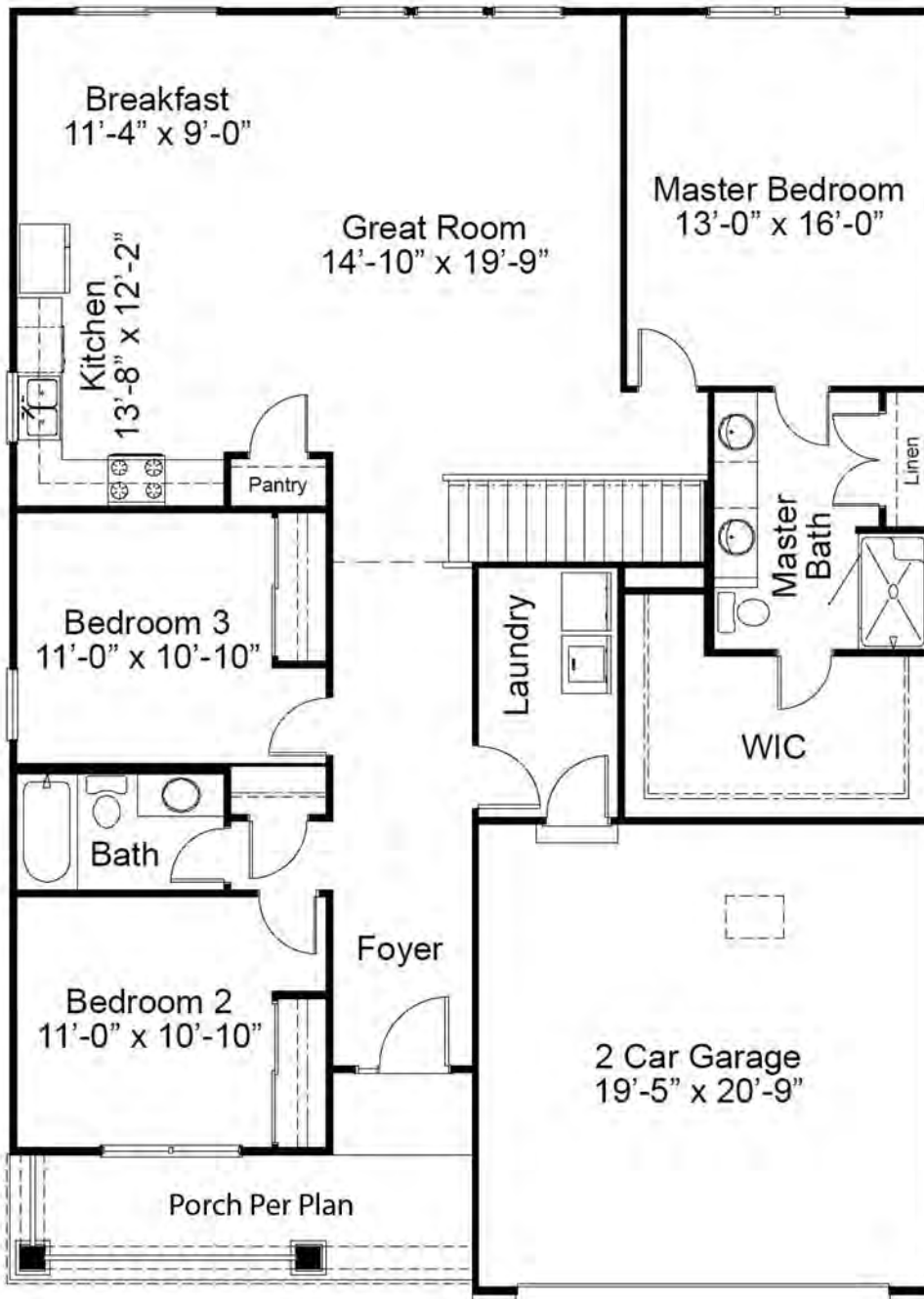


ELEVATION VI



The Brookmont Ranch Floor Plan

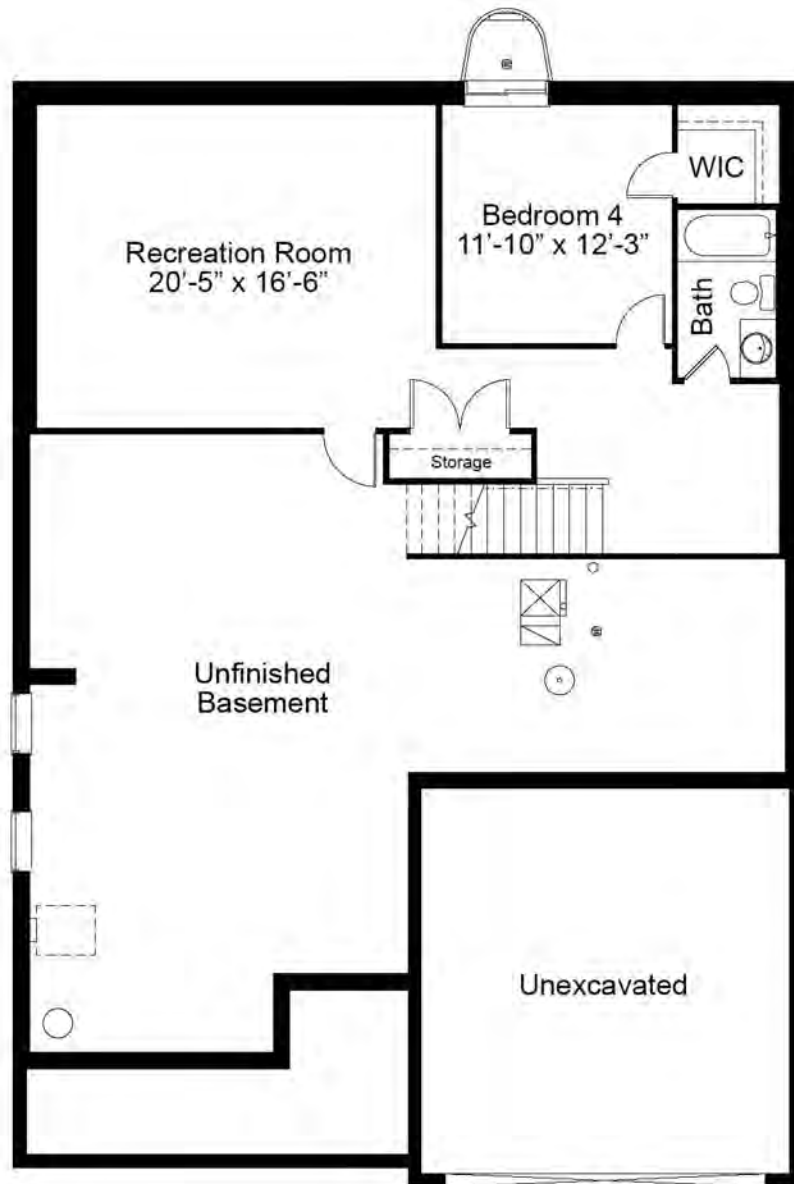
FIRST FLOOR PLAN



Optional Luxury Master Bath

The Brookmont Ranch Floor Plan

OPTIONAL FINISHED LOWER LEVEL



695 Trade Center Boulevard | Chesterfield | MO | 63005 | FandFHomes.com



Fischer & Frichtel Custom Homes has a policy of continuous improvements of products and reserves the right to make improvements or changes on products and prices without notice. Homes built in this community are built in accordance with the standard features of this community and may differ from similar plans offered in other Fischer & Frichtel developments. Floor plans and exterior designs may show options not included in the base price. All square footages are approximate and may vary from actual plan dimensions.



REV 3-24-2021